



## WorldCat Local at University of Illinois Springfield

Janetta Waterhouse  
March 27, 2013



## About UIS

- Founded in 1969 as Sangamon State University
- Originally only admitted upper-division undergraduates and master's students
- Joined with UI in 1995 and became UIS
- Honor's level lower-division students admitted since 2001 and all undergraduates since 2006
- About the students
  - 5,000+ students in Fall 2012, FTE of ~3,500
  - Half full-time, half part-time; average age of 29, and 30% minority students
  - Over 30% are online only, another third are both online and on-ground

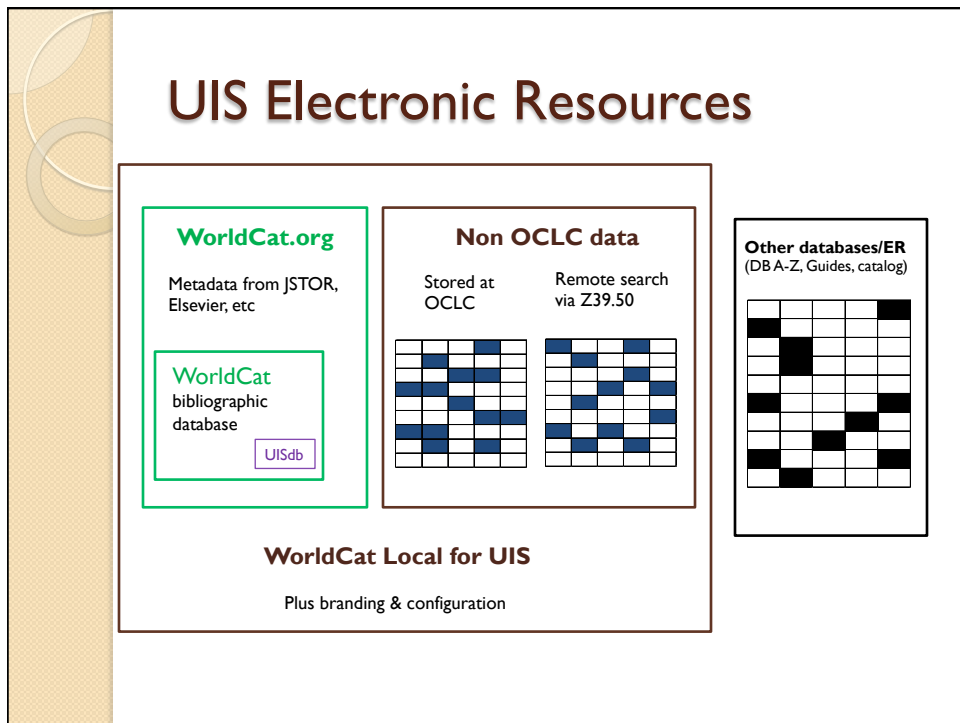
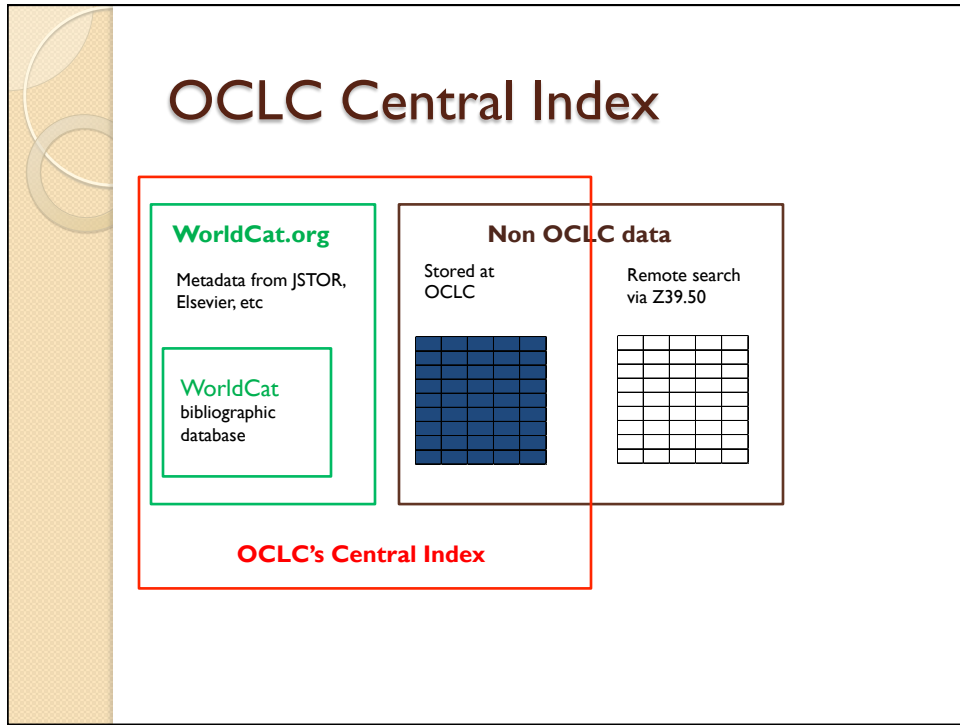
## About Brookens Library

- Completed in 1975, first permanent building  
90% of materials budget spent on e-resources
- Total print volumes 526,892 – down from 562,813 in 2010
- 35 total FTE library faculty, staff & students
- 23 full and part-time staff, 7 are librarians
- Largest computer lab on campus
- 360 RM as ERMS, formerly SFX as KB/Resolver

## About Web-Scale Discovery

- **1. Central Index**
  - Plus remotely searched databases
  - Database selection
- Actions after search result set is obtained to get access to items
- **2. Discovery Interface**

Hoeppner, Athena. "The Ins And Outs Of Evaluating Web-Scale Discovery Services." *Computers In Libraries* 32.3 (2012): 6-40. *Academic Search Complete*. Web. 27 Mar. 2013.



## About WorldCat Local

- Terms are searched against the **selected database**, filters applied if applicable
- Actions after the search result set is obtained to get **access to items**:
  - Z39.50 lookup in Voyager for Availability and links
  - WCKB lookup for links to full text and open access
  - Links from 856 in OCLC master record

## WorldCat Knowledge Base

- Comes free with WCL but can be a separate KB to maintain
- Can be used to set OCLC holdings
- After search results are determined, WCKB searches for holdings information to create View Now links
- Options for entering/updating holdings:
  - Pubget – vendor info pushed to OCLC
  - Batch upload KBART data
  - Configuration interface

## Selection & Early Implementation

- Lincoln Trail libraries offered a pilot in 2007
- No local solution available, only hosted
- Initial implementation complete in 2008; worked with OCLC implementation manager
- No formal study for users yet, but hoped for:
  - Easier search interface than other options at the time
  - Geographic feature helpful for our large number of online students

## Ongoing Implementation

- Starting up with Worldcat.org and basic configuration
- Branding and advanced configuration happened in 2011 and is ongoing
- WorldCat Knowledge Base and View Now links added in 2010-11
- Full use of options means configuration never really complete
- Currently migrating away from SFX to WCKB

## Branding

- Banner and colors in WCL configuration
- Quick Search chosen by Publicity Committee to integrate with [Quick Help](#), [Quick Links](#), [Quick Start](#) (in Research Guides)
- Home page updated in August to use Quick Search as the default
  - Added KW, Title, Author, etc drop-down choices
  - Modified Journal search for WCKB

## Levels of Fulfillment

- Items [owned by Brookens](#) are level 1
  - We plan to implement Hold Request this summer
- I-Share items are presented as level 2 fulfillment
  - Links directly into I-Share request page
  - Will need to re-request if patron has to create account
- WorldCat libraries are level 3 fulfillment
  - Open URL form to ILLiad
  - Always on due to large number of online students; requests transferred to document delivery in ILLiad

## Issue Resolution

- Implementation manager during initial startup
- OCLC support center tickets
- Quarterly installs
- User group community
  - Email list
  - User support center

## Issues

- Known item searching
  - Mostly due to default sort
  - Top 5 available
- Periodical holdings display
  - [Nature results](#)
  - Note no call number, View item details slightly better
- FRBR and I-Share
  - [Quick Search results](#)
  - [I-Share VuFind results](#)

## Issues

- Searching other databases within Quick Search
  - [Computer Science search](#)
- Held by Brookens Library
  - [Brief results](#)
- [Matches on title](#), mostly a problem with eBooks
- Can't link directly to citation search or journal title search results (WCKB)

## Disadvantages

- Known item searching
- Integration with other databases
- FRBR
- Links to items
- Statistics



## Advantages

- Single search option for users
- Levels of fulfillment, especially ILL
- Knowledge base and resolver easy to maintain
- FRBR
- Direct links to items and Availability
- Configuration fairly easy
- OCLC support and regular updates