

## Features available in the Voyager.ini file

In addition to the module-specific stanzas that are included by default in the Voyager.ini file on your workstation, and that you must configure for your Voyager clients to connect to the Voyager server, there are additional, optional stanzas available for configuring special features of Voyager.

These optional stanzas and variables are not fully configured in the default Voyager.ini file you receive when you do a manual installation of Voyager clients. You will see some optional stanzas in the Voyager.ini file you receive when you use CARLI's Voyager Client Update Checker to install or update Voyager clients. You can add or edit all stanzas and variables in a text editor like Notepad or Wordpad.

None of the optional features described in this document are required to use the I-Share Voyager system. They may, however, be useful to you.

You can find an example of a Voyager.ini file at:

[http://www.carli.illinois.edu/sites/files/i-share/documentation/secure/example\\_voyager\\_ini\\_911.pdf](http://www.carli.illinois.edu/sites/files/i-share/documentation/secure/example_voyager_ini_911.pdf)

### [MARC POSTing]

This feature allows you to open in WebVoyage the bibliographic record you are viewing in a Voyager staff client, so you can see it as your users will see it. This functionality is only applicable to the WebVoyage interface to Voyager; it is not available with VuFind. CARLI's Voyager Update Checker installs a Voyager.ini file with this feature already enabled.

To enable this feature, edit the [MARC POSTing] stanza in the Voyager.ini file on your PC so that it says

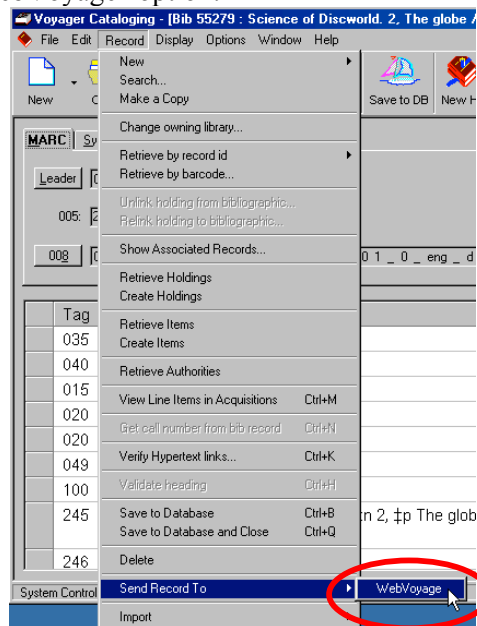
For WebVoyage Classic:

[MARC POSTing]

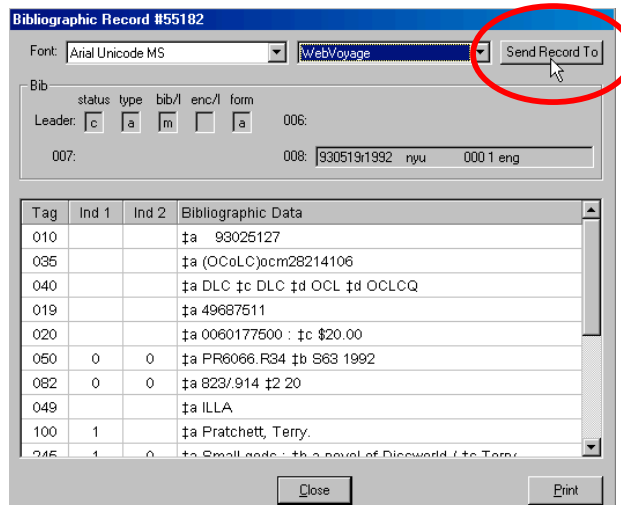
webVoyage="https://i-share.carli.illinois.edu/xxx/cgi-bin/Pbibredirect.cgi"

Replace the **xxx** with your library's three-letter I-Share library code.

When you restart the Cataloging client and view a bibliographic record, the Record menu will contain the "Send Record To... WebVoyage" option:



In Acquisitions and Circulation staff clients, the “Send Record To” button appears in the MARC record view only:



You can use the “Send Record To” feature even from a bibliographic record on which you have checked the “Suppressed from OPAC” box. Viewing the record as it would appear in WebVoyage does not cause it to begin to appear to users: until you uncheck the "Suppressed from OPAC" box, the record will remain suppressed and irretrievable in the OPAC.

The “Send Record To” command does not perform any save-to-database function, nor does it have any role in sending records into the Universal Catalog.

### [GlobalLog]

The [GlobalLog] Stanza has features that can enable single client logon or customize the search results returned within staff clients:

```
SingleLogin=N  
ServerSortList=Y  
ASCIISortList=N  
ASCIISortColumn=Y
```

You may change the Y and N settings as desired to toggle the features on (Y) or off (N). The Y and N are case-sensitive. For information on these settings, see chapter 4 of the *Voyager Technical User's Guide*.

In this same stanza is:

```
Encrypt=Y
```

**CARLI strongly recommends that this value be set to Encrypt=Y so that all Voyager client traffic from your PC to the server is encrypted and cannot be read by a third party. A value of Encrypt=N means that only client password strings are encrypted; all other Voyager client data transmitted from your PC to the server is in clear text and may be intercepted by a third party.**

Unfortunately, in Voyager 9.1.1, Pick and Scan’s Server Logs are only available if Encrypt=N. As a result, I-Share libraries may want to change the value to Encrypt=N on select PCs that will be using Pick and Scan frequently in the Cataloging client but that do not use Circulation or Acquisition clients at all, which handle more sensitive data. Alternatively, temporarily change the value to Encrypt=N during Pick and Scan projects in Cataloging or Circulation clients, and then change the value back to Y as soon as you have completed the project.

The Voyager.ini file installed by CARLI's Voyager Client Update Checker has the [GlobalLog] features configured as shown above.

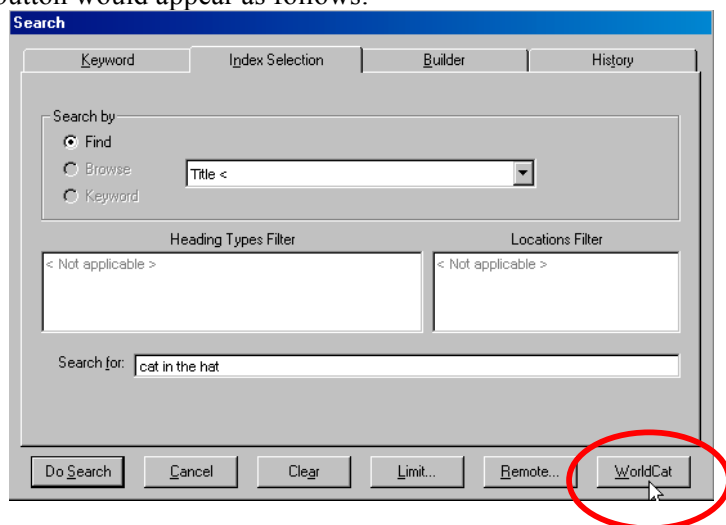
### [Search URI]

This stanza allows you to add a button to the Search dialog box that will re-execute your "Search for" terms in another web service. Insert the stanza into the Voyager.ini file located in the \Voyager folder on your PC. The Voyager.ini file installed with new Voyager clients—either by manual installation or with CARLI's Voyager Client Update Checker—comes with some predefined entries that are commented out with the # symbol. Remove the # symbol to activate those options, or create your own.

For example, you could configure the button to search WorldCat by adding this stanza to the Voyager.ini file:

```
[SearchURI]
Name=WorldCat
URI=http://www.worldcat.org/
Copy=Y
SearchSyntax=search?q=
```

The WorldCat button would appear as follows:



Similarly, you could configure a button to search Google by adding this stanza to the Voyager.ini file:

```
[SearchURI]
Name=Google
URI=http://www.google.com/
Copy=Y
SearchSyntax=search?q=
```

You could configure a button to search your SFX A-Z List by title (replace \*\*\* in the URI line below with the three-letter code for your library):

```
[SearchURI]
Name=SFX A-Z
URI=http://sfx.carli.illinois.edu/sfx***/az?
Copy=Y
SearchSyntax=param_perform_save=searchTitle&param_type_save=textSearch&param_textSearchType_save=contains&param_pattern_value=
```

If you anticipate wanting to search the SFX A-Z list from within the Voyager staff client by ISSN rather than by title, change the value for the SearchSyntax= line above to:

```
SearchSyntax=param_perform_save=locate&param_issn_value=
```

You could also configure a button to search your WebVoyage or VuFind OPAC. The search defaults shown below perform a Title search (where **xxx** is your library's three-letter I-Share code), but other search types are possible. Contact the CARLI Office at [support@carli.illinois.edu](mailto:support@carli.illinois.edu) for more information on other search types.

For WebVoyage Classic:

```
[SearchURI]
Name=webVoyage
URI=https://i-share.carli.illinois.edu/xxx
Copy=Y
SearchSyntax=/cgi-
bin/Pwebrecon.cgi?Search_Arg=<searchtext>&SL=None&Search_Code=TALL&DB=local&C
NT=20&HIST=1
```

For the I-Share union catalog (VuFind):

```
[SearchURI]
Name=I-Share
URI=https://vufind.carli.illinois.edu/all/vf
Copy=Y
SearchSyntax=/Search/Home?type=title&start_over=1&submit=Find&lookfor=
```

For a local VuFind catalog:

```
[SearchURI]
Name=VuFind
URI=https://vufind.carli.illinois.edu/vf-xxx
Copy=Y
SearchSyntax=/Search/Home?type=title&start_over=1&submit=Find&lookfor=
```

### **Circulation Charge Timeout**

This feature allows for additional security and makes it more difficult to charge an item to the wrong patron by accident.

You can set the Circulation ChargeTimeout value in the [Circulation] stanza of the Voyager.ini file. After you restart the Circulation client, any patron data or charged item information in the Charge workspace will disappear, automatically, after the specified number of consecutive idle seconds. For information on the Circulation ChargeTimeout, see the *Voyager Circulation User's Guide*.

CARLI recommends a value of 60 seconds. (The **##** below represents your library-specific Voyager port number.)

```
[Circulation]
Server=voyager.carli.illinois.edu
Port=1##30
Timeout=600
ChargeTimeout=60
```

### **[Upgrade]**

CARLI does not use the [Upgrade] stanza. It is inactive in the file when the values (after the equal signs) are blank or when the lines are commented out with a # sign in front of them.

For more information on the Voyager.ini file, see Chapter 4 of the *Voyager Technical User's Guide*. You can download Voyager User's Guides in pdf format from the CARLI web site at <http://www.carli.illinois.edu/products-services/i-share/vendor-docs>

If you have any questions about these features of the Voyager.ini file, please contact CARLI at [support@carli.illinois.edu](mailto:support@carli.illinois.edu).