



CARLI

2019 ANNUAL MEETING



2019-2020 CARLI BOARD OF DIRECTORS

Name	Constituency	Institution
Fred Barnhart	Public Universities	Northern Illinois University
Spencer Brayton	Community Colleges	Waubensee Community College
Anne Craig	Ex Officio	CARLI
Rebecca Donald	Private Institutions	Trinity International University
Jeff Douglas	Private Institutions	Knox College
Cindy Fuller	Ex Officio	Millikin University
Karen Janke	Private Institutions	Erikson Institute
Jacob Jeremiah	Community Colleges	Oakton Community College
Tammy Kuhn-Schnell	Community Colleges	Lincoln Land Community College
Taran Ley	Public Universities	Southern Illinois University School of Medicine
Greg McCormick	Ex Officio	Illinois State Library
Pattie Piotrowski	Public Universities	University of Illinois at Springfield
John Pollitz	Public Universities	Southern Illinois University Carbondale
John Small	Private Institutions	North Central College
Frances Whaley	Community Colleges	Kishwaukee College

Thanks to our Gold Sponsors





EBSCO



These slides (and all meeting materials) will be on the event website:

<https://www.carli.illinois.edu/carli-annual-meeting-2019>



ILA AWARD WINNERS 2019

Gwen Gregory, UIC Daley Library, Illinois Academic Librarian of the Year Award

Stacey Knight-Davis, EIU Booth Library, Reference Services Award

JJ Pionke, UIUC Social Sciences, Health, and Education Library, Crosman Memorial Award

Erin Zimmerman, Heartland Community College Library, Resources and Technical Services Forum Scholarship Recognition





**Technical
Services
Award**

**Illinois
Library
Association**



CARLI BY THE NUMBERS

130 member libraries

- **Governing members:** 128
 - All public universities: 13
 - All community colleges: 39
 - Private, research, and special: 76
- **Affiliates (for-profit institutions):** 2

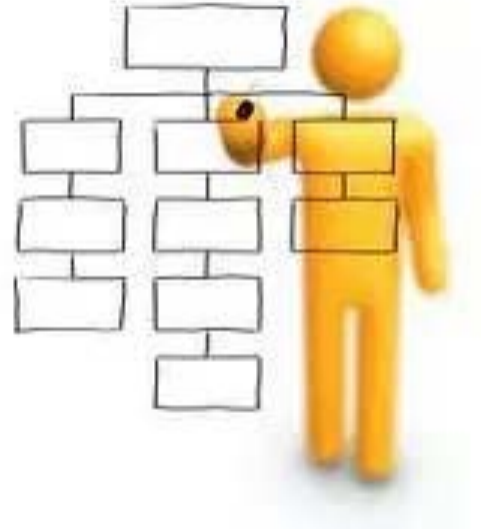
Our newest Governing Member:
Chicago History Museum

**CARLI member libraries serve
90% of Illinois higher education
students, faculty and staff.**





CARLI



- **Promotions**

- Diane Day, Fiscal Officer
- Michelle Haake, Senior Coordinator, Membership and Communications
- Jennifer Taylor, Assistant Director, Electronic Resources

- **New staff**

- Tim David, Accountant I
- Nicole Ream-Sotomayor, Senior Electronic Resources Coordinator
- Emily Wros, CARLI Graduate Assistant

COMMITTEES AND TASK FORCES

- Work on spectrum of projects/services
- Represent diverse institutions
- Unite member libraries' staff

THANK YOU for your excellent work!



Illinois State University

SPECIAL PROGRAMS

Change is Good: You Go First! Leading Others To and Through Change, April 2, 2019

Mid-Level Leaders Symposium: CARLI's Next Deans and Directors, September 25, 2019



ACRL ROADSHOWS

2019

- **Standards for Libraries in Higher Education**, sponsors Northwestern University and University of Illinois at Chicago

2018

- **Engaging with the ACRL Framework**, sponsors Illinois State University and Illinois Wesleyan University
- **Scholarly Communication**, sponsor University of Illinois at Urbana-Champaign

Other ACRL Roadshows

- **Assessment in Action**
- **Research Data Management**
- **Coming soon: OER**

Will you be a sponsor?



University of Illinois at Chicago

University of Illinois: \$3,709,800 (State of IL appropriation)

Membership Fees: \$ 449,278

I-Share Assessments: \$1,727,731

Pass-through revenue:

- Subscriptions to databases: *estimated* \$15 million
- ILDS grant from the Illinois State Library:
estimated \$822,000

Charged with reviewing:

- Annual CARLI Governing Membership Fees
- Annual I-Share Assessments

Goal of producing a proposal for the CARLI Board of Directors.

Report included:

- The methodologies for fee/assessment calculations
- CARLI Membership Fee rates through at least FY23
- I-Share Assessment rates through at least FY23
- Timelines for changes

WORK OF THE TASK FORCE

- Membership Fee and I-Share Assessment annual rates were set for FY20 and FY21
- Task force began its work by examining rates for FY22 and beyond

In adopting recommendations, the Board of Directors supported several principles from the task force:

- Ensure that CARLI members have at least 24 months notice for their individual fee/assessment rates.
- Recalculate rates every three years to avoid drastic changes in rates.
- Use data that are easily obtainable from reliable sources.
- Buffer members' increases with escalating periods to reach any new amount gradually.

TIMELINE FOR THE CARLI GOVERNING MEMBERSHIP FEE

FY20	FY21	FY22	FY23	FY24	FY25
<p>Already set</p>	<p>Already set</p>	<p>Implement new membership rates for all members.</p> <p>Recalculate rates for FY25 based on most current data.</p>	<p>Across-the-board +3% increase from FY22 fees.</p>	<p>Across-the-board +3% increase from FY23 fees.</p>	<p>Implement new membership rates for all members.</p> <p>Recalculate rates for FY28 based on most current data.</p>



TIMELINE FOR I-SHARE ASSESSMENTS

FY20	FY21	FY22	FY23	FY24	FY25
Already set	Already set	Across-the-board +3% increase from FY21 fees. Reexamine calculations based on Alma/Primo VE data with the goal of implementing new assessments in FY25.	Across-the-board +3% increase from FY22 fees.	Across-the-board +3% increase from FY23 fees.	Implement new I-Share Assessments. Recalculate rates for FY28 based on most current data.



All Membership Fees and I-Share Assessments, FY19-FY24, are on the CARLI website:

<https://www.carli.illinois.edu/sites/files/files/MembershipFees.pdf>

<https://www.carli.illinois.edu/sites/files/files/I-ShareAssessments.pdf>

FISCAL YEAR 2019 ANNUAL REPORT

JULY 1, 2018 - JUNE 30, 2019

The Consortium of Academic and Research Libraries in Illinois empowers Illinois academic and research libraries to create and sustain a rich, supportive, and diverse knowledge environment that furthers learning, research, and innovation in order to serve students, faculty, and researchers. CARLI provides value to member libraries of all types, sizes, and missions by sharing costs, collections, expertise, and services. (CARLI Mission Statement 2018)

Through the combined effort of the CARLI Board of Directors, staff at CARLI member libraries, and the CARLI staff, I am pleased to present this annual report. The report includes the completed CARLI 2020 Strategic Plan and our accomplishments in support of these priorities. The strategic plan outlines our organization's aspirations and defines our understanding of the consortium's focus as we move towards the fifteenth anniversary of CARLI on July 1, 2020. Over the next two years, CARLI will be focused on providing excellence, leadership, innovation, and collaboration consistent with our organizational values:

- **Careful stewardship** of all CARLI resources
- **Cooperation and Engagement** among academic and research libraries
- **Responsiveness** to member needs
- **Commitment** to intellectual freedom, privacy, security of library records, library standards, and open access to information resources
- **Advocacy** for academic and research libraries at the local, state, regional, and national levels
- **Innovation** in identifying and implementing collaborative solutions to shared challenges



- Successful completion of the migration to the OCLC-hosted CONTENTdm environment in April 2019
- 298 collections provided by 47 different institutions
- For support:
 - Contact the CARLI Office first with any questions or problems with CONTENTdm



South Suburban College

ILLINOIS DIGITAL HERITAGE HUB (IDHH)



- Collaborative venture among ISL, CARLI, CPL, & UIUC
- CARLI staff support REPOX harvester
- IDHH currently contributing 320,000+ metadata records from:
 - CARLI:
 - CARLI Digital Collections
 - DePaul University, Illinois State University, Northern Illinois University, University of Illinois at Urbana-Champaign
 - Illinois State Library's Illinois Digital Archives
 - Chicago Public Library
 - Chicago History Museum
 - Madison Historical
 - Des Plaines Public Library
- DPLA information page for CARLI members:

<https://www.carli.illinois.edu/products-services/contentdm/dpla>

IT'S A BIG BIRTHDAY!

40th Anniversary



You're
invited!

CARLI 40th Anniversary of Resource Sharing

June 25-30, 2020

During the American Library Association Annual Conference

Somewhere in Chicago!



CARLI Grows...

*Teaching
Learning
Innovation
Research
Scholarship*

CARLI Grows the Profession

Celebrating 40 years of library resource sharing in 2020



CARLI

Consortium of
Academic and Research
Libraries in Illinois

NEWS JOBS EMAIL LISTS MEMBER DIRECTORY CONTACT

PRODUCTS & SERVICES

MEMBERSHIP

EVENTS

GOVERNANCE

ABOUT

Search



Statewide access to a wealth of resources

CARLI I-Share library patrons have easy access to a consortial collection that ranks among the world's largest research libraries.

91
member
institutions

14.7 million
bibliographic
records

38.1 million
item records

DC Search CARLI Digital Collections »

SYSTEM STATUS

 All Systems Active: All Systems Active

 Search I-Share Catalog »

\$ Give to CARLI »

<https://www.carli.illinois.edu/give>

 Sponsor an Event »

For a collated list, please review the → [Highlights of the Alma and Primo VE project page.](#)

OTHER GREAT NEWS

- Signed contract for EBSCO Academic Search Premier & Business Source Elite: renewal options to 2029
- Hosted first-ever Career Fair with the iSchool
- Supporting Open Textbook Network Certificate in OER Librarianship Program
- Signed two contracts for ILDS: IHLS and RAILS
- Gathering pricing info for the members interested in joining I-Share post-Alma/Primo VE integration
- Debuted NC Live Website Service



ILLINOIS VALLEY COMMUNITY COLLEGE JACOBS LIBRARY

IVCC QUICK
LINKS

RESEARCH QUICK
LINKS

OTTAWA & DISTANCE QUICK
LINKS

FACULTY QUICK
LINKS

[IVCC](#) | [JACOBS LIBRARY](#) | [LIBRARY](#) | [HOME](#)

Library

HOME

Fall 2019 Hours

Monday 7:30 am - 4:30 pm

Tuesday 7:30 am - 7:00 pm

Wednesday 7:30 am - 7:00 pm

Thursday 7:30 am - 4:30 pm

Friday 9:00 am - 2:00 pm

Saturday & Sunday closed



Research

Locate [sources](#), [tools](#), and [resources](#) available to you.



Services

Discover [services](#) for students, faculty, staff, and visitors.

FOCAL POINTS FOR FY20

- **Alma/Primo VE migration**
- **CARLI Counts**
- **Continue to shift from server ownership to cloud and vendor-hosted services**
- **Replace current aging email support/ticketing system with a hosted, cloud-based service**



Trinity International University

Upcoming

- **Managing Your Online Identity.** Wednesday, November 20, 2019, 10-11 a.m.
- **CARLI Member Libraries and the 2020 Census: Promoting the Count.** Wednesday, December 11, 2019, 10-11 a.m.

Archived this year on our website

<https://www.carli.illinois.edu/membership/directors>

- CARLI Counts in LIBRAS Libraries
- ACRL Project Outcome Webinar
- User Studies, Privacy, and IRB - What Every Librarian Needs to Know

COMMUNICATING WITH YOU

- Email lists: <https://www.carli.illinois.edu/email-lists>
 - Website: <https://www.carli.illinois.edu/>
 - CARLI Support Email: support@carli.illinois.edu
 - Toll-free phone: (866) 904-5843
-
- Monthly Newsletter
 - Directors' Updates emails
 - Annual “Value Letter” for each member
-
- Board / Committee / Task Force: minutes available
 - CARLI Calendar: registration info listed ASAP
 - System Status Updates on homepage
 - ILDS satisfaction survey—coming January 2020