

MIGRATING TO A NEW CATALOG: IMPACT ON PUBLIC SERVICES

NIAMH MCGUIGAN
HEAD OF REFERENCE SERVICES
LOYOLA UNIVERSITY CHICAGO

LOYOLA UNIVERSITY CHICAGO

- 15,000 FTE
- Multiple Campus Libraries
- Library in Rome
- Law Library
- Health Sciences Library



TRANSITION TO ALMA/PRIMO

- Short migration period: January to August.
- The transition continued long after the migration was officially over. Very brief period of overlap running both Voyager catalog and Primo.
- Users were not interested in formal training.

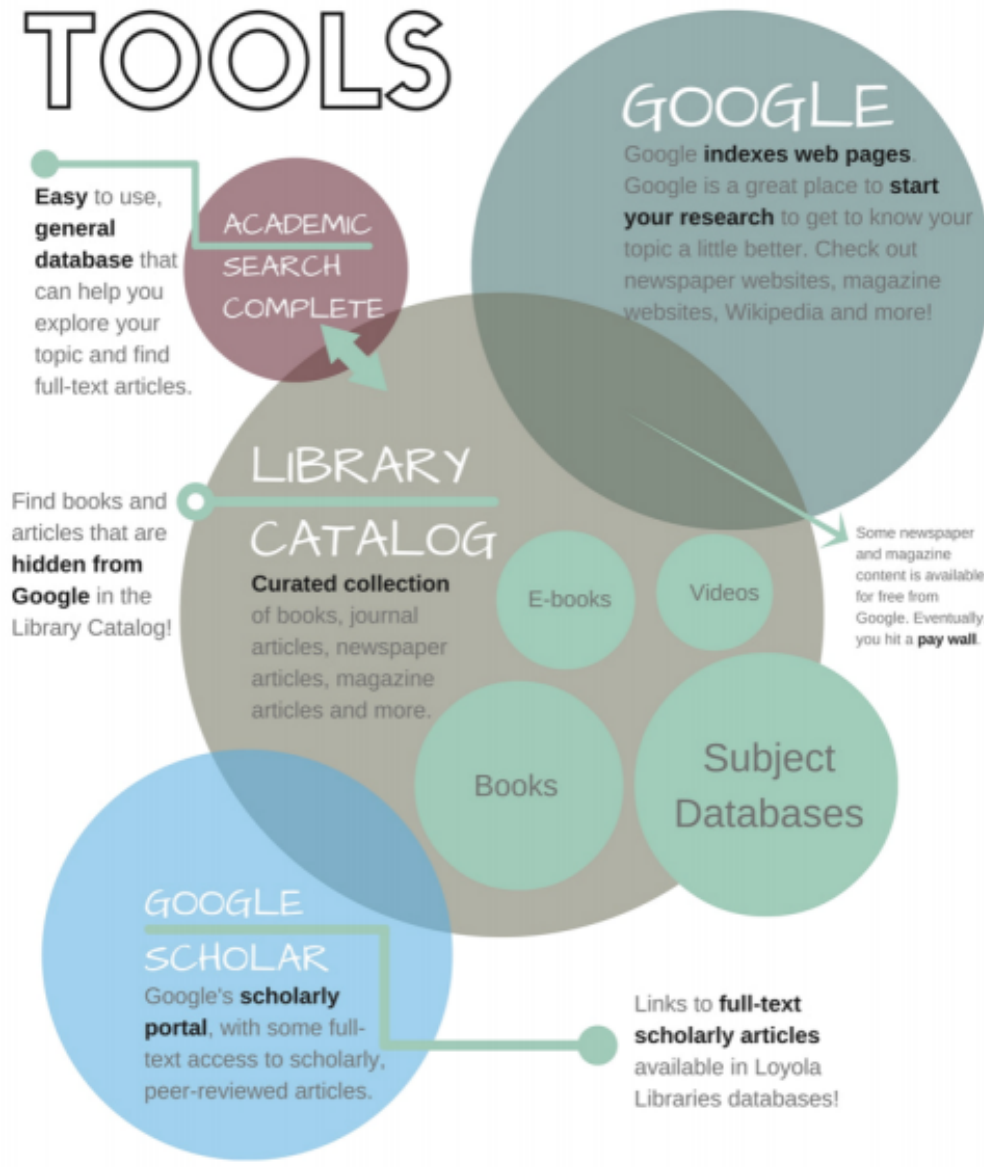
GETTING USED TO A NEW DISCOVERY TOOL

- The system is updated frequently, and search results are always changing.
- Public services librarians need a deeper understanding of catalog records.
- Understanding how Primo carries out searches is complicated - Boolean searching, full text search, FRBR.
- Link resolver woes.

IMPACT ON LIBRARY INSTRUCTION

- Explaining what a discovery tool is.
- More emphasis on selecting and evaluating sources, less time spent on constructing keyword searches.
- Lots of class time spent on finding full text.
- Concern that the skills don't translate to disciplinary databases.

UNDERSTANDING SEARCH TOOLS



Created by Terri
Artemchik

[http://libguides.luc.edu/
ucwr110/searchtools](http://libguides.luc.edu/ucwr110/searchtools)

WORKING TOGETHER

- Adoption of project management techniques.
- Cross-departmental and cross-library working groups to manage ongoing maintenance, troubleshooting, updates, and enhancements.
- Stronger relationships between staff members.
- Deeper involvement with our tools.

THANK YOU

NIAMH MCGUIGAN
NMCGUIGAN@LUC.EDU