



# **YouTube Tutorial Best Practices for Accessibility**

**Kimberly Shotick, she/they**

**Alissa Droog, she/her**

# Introductions

Kimberly Shotick (she/they)

Student Success Librarian

[kshotick@niu.edu](mailto:kshotick@niu.edu)



Alissa Droog (she/her)

Education & Social Sciences Librarian

[adroog@niu.edu](mailto:adroog@niu.edu)



# Agenda

1. How to incorporate line breaks into captions
2. How to create YouTube chapters
3. How to embed videos into LibGuides with responsive design

# LINE BREAKS FOR CAPTIONS



# BEFORE: CAPTIONS WITHOUT LINE BREAKS

In this tutorial, you'll learn how to evaluate resources so that you can make more informed decisions on what information is reliable for academic work, professional work, and even your personal life.

# AFTER: CAPTIONS WITH LINE BREAKS

In this tutorial,  
you'll learn how to evaluate resources,  
so that you can make  
more informed decisions  
on what information is reliable  
for academic work,  
professional work,  
and even your personal life.

1

# LINES SHOULD BE 36-40 CHARACTERS LONG (5-10 WORDS)



Welcome to this library tutorial  
(34 characters)



Welcome to this library tutorial about how to use ERIC  
(54 characters)

## 2

# LINES SHOULD BE SIMILAR IN LENGTH



This video will introduce you to ERIC,  
show you how to access ERIC at NIU...



This video will introduce you  
to ERIC,  
show you how to access ERIC at NIU...



# 3

## ADD LINE BREAKS AFTER COMMAS

In this tutorial,  
you'll learn how to evaluate resources,  
so that you can make  
more informed decisions  
on what information is reliable  
for academic work,  
professional work,  
and even your personal life.

# 4

## ADD LINE BREAKS BEFORE CONJUNCTIVE WORDS (AND, OR, BUT, ETC.)

In this tutorial,  
you'll learn how to evaluate resources,  
so that you can make  
more informed decisions  
on what information is reliable  
for academic work,  
professional work,  
and even your personal life.

# 5 ADD TWO LINE BREAKS AFTER HARD PUNCTUATION (? . !)

Welcome to this library tutorial  
about how to use ERIC.

This video will introduce you to ERIC,  
show you how  
to access ERIC at NIU,

# **YOUR TURN! WHERE WOULD YOU PUT THE LINE BREAKS?**

Hello, my name is Alissa and I'm the  
Education Librarian at Northern Illinois  
University. I can help you find resources for  
your research.

# YOUR TURN! WHERE WOULD YOU PUT THE LINE BREAKS?

Hello,

my name is Alissa

and I'm the Education Librarian

at Northern Illinois University.

I can help you find

resources for your research.

# OTHER CONSIDERATIONS

Capitalize clickables

Click on the Find It button

Separate multi-step instructions on each line

Click on The Find It button,  
download the PDF,  
do a happy dance.

# OTHER CONSIDERATIONS

When there are multiple speakers with no visual indication that speakers changed, use [Name] to identify who is speaking (or >> if it is unknown)

[Alissa] Hi everyone,

[Kimberly] Hi Alissa

# **SUMMARY: BEST PRACTICES FOR INTENTIONAL LINE BREAKS IN VIDEO CAPTIONS**

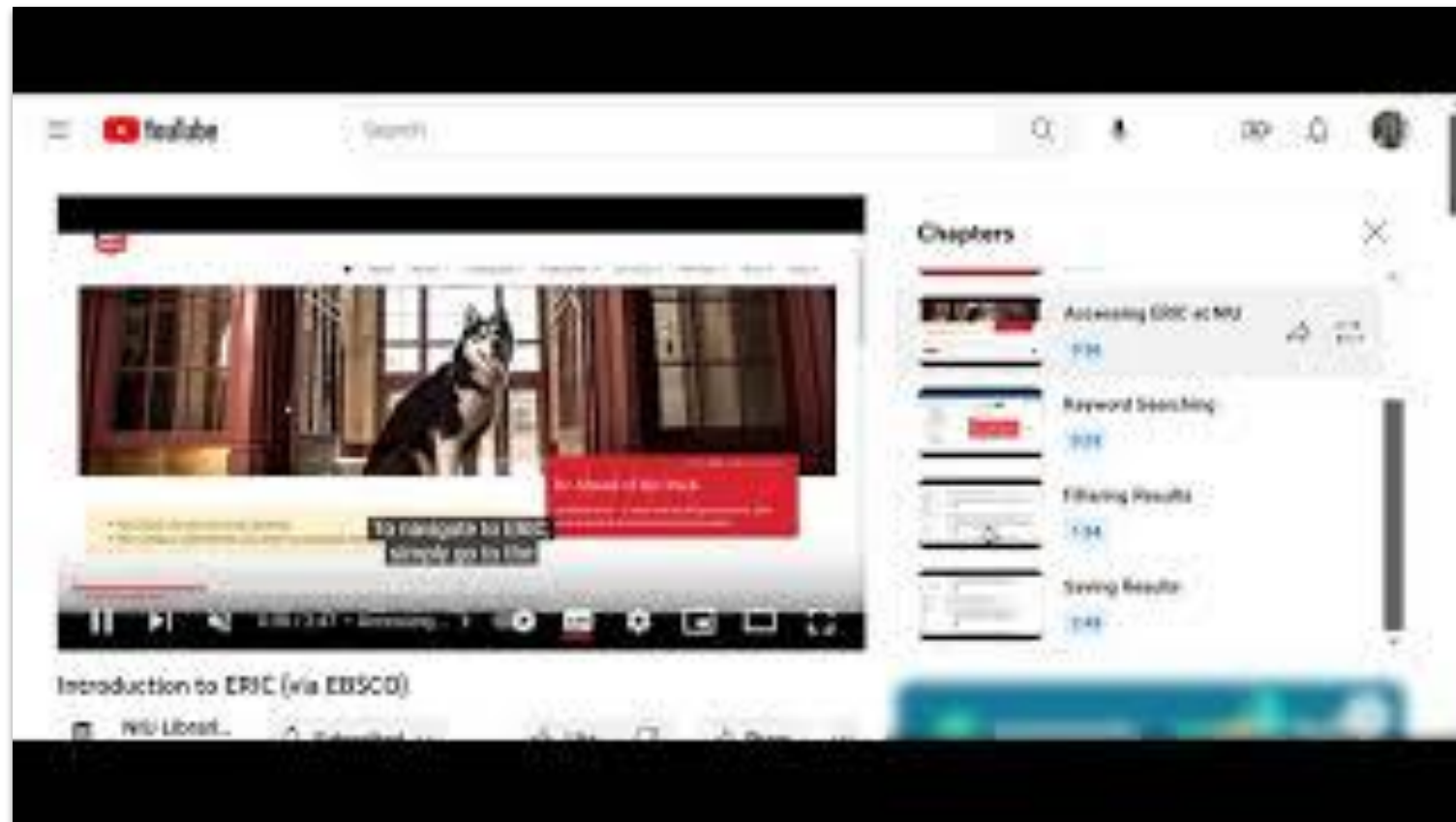
- 1** Lines should be 36-40 characters long (5-10 words)
- 2** Lines should be similar in length
- 3** Add line breaks after commas
- 4** Add line breaks before conjunctive words (and, or, but, etc.)
- 5** Add two line breaks after hard punctuation (? . !)





# YOUTUBE CHAPTERS

# WHAT ARE YOUTUBE CHAPTERS?



# CHAPTER BEST PRACTICES

- Use with videos with 3+ distinct sections
- Sections should be 10+ seconds long
- Use your video outline for inspiration
- Label your chapters meaningfully with sentences and/or questions (e.g. “Where can I get research help?” not “research help desk”)

# HOW TO ADD CHAPTERS

In the video description add **MINUTES:SECONDS** chapter title

This video will go over the basics for using Zotero for reference management.

**0:00** What is Zotero?

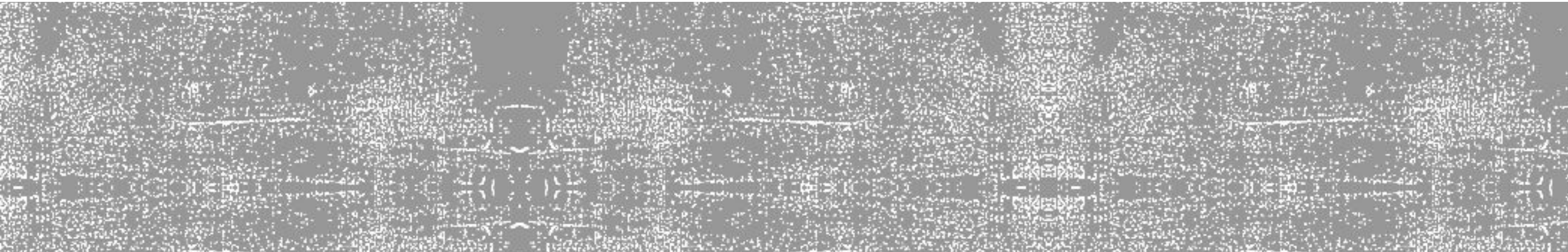
**5:48** How is Zotero organized?

**16:03** How to add sources from the web

**23:00** How to add sources from a database



# Embedding Videos with Responsive Design



# BAD EXAMPLE - DESKTOP

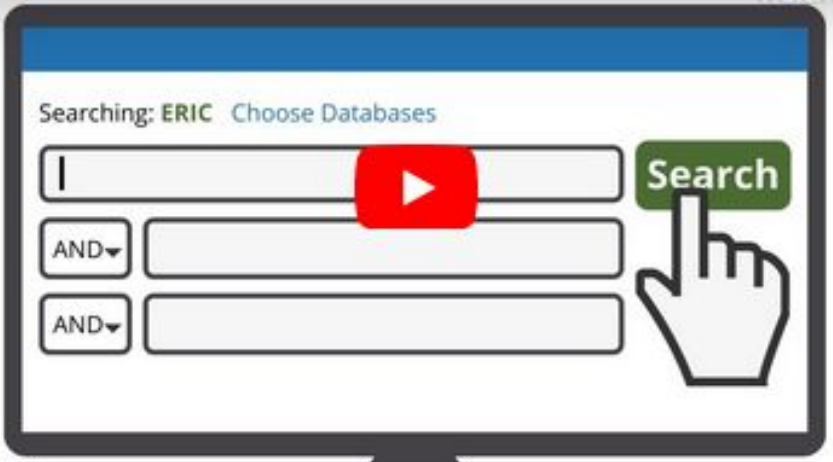


# BAD EXAMPLE- MOBILE

TEST 3

## Introduction to ERIC

Introduction to ERIC (via EBSCO) Watch later Share



Searching: ERIC Choose Databases

Search

AND

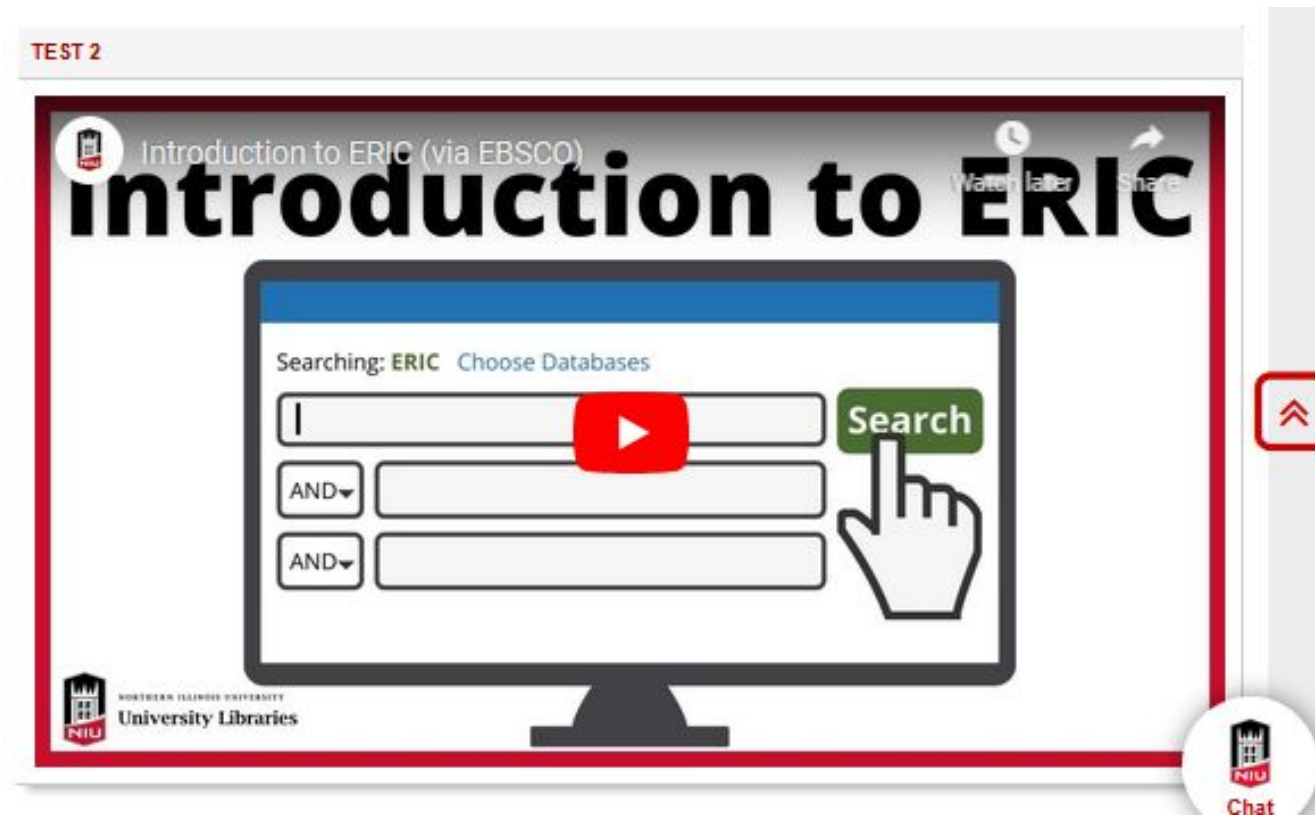
AND

NIU Chat

Last Updated: Apr 24, 2023 1:31 PM | URL: <https://libguides.niu.edu/LearningCommonsTraining> | Print Page

Learn to LibApps

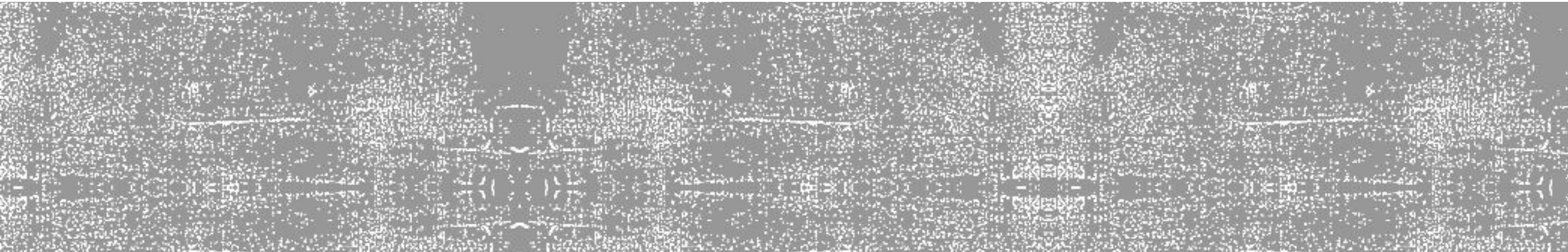
# RESPONSIVE EXAMPLE



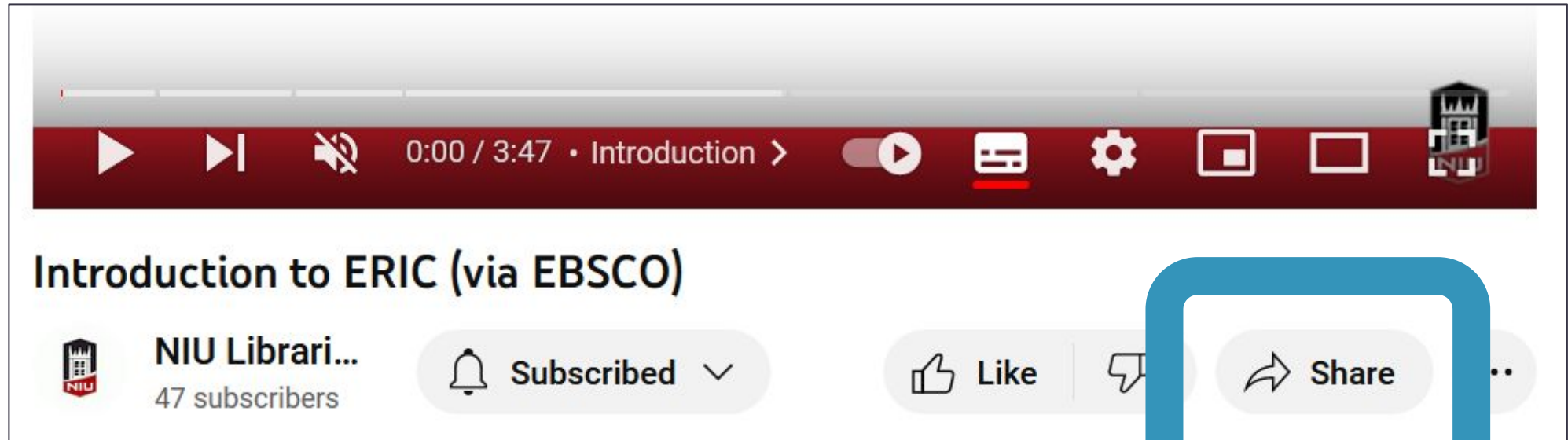




# How to add responsive code



# 1.1 Copy YouTube Embed Code



The image shows a YouTube video player interface. The video title is "Introduction to ERIC (via EBSCO)" and the channel is "NIU Librari..." with 47 subscribers. The video is currently at 0:00 / 3:47. The "Share" button is highlighted with a blue rounded rectangle. The video player controls include play, next, mute, volume, progress, play/pause, full screen, and a channel icon.

Introduction to ERIC (via EBSCO)

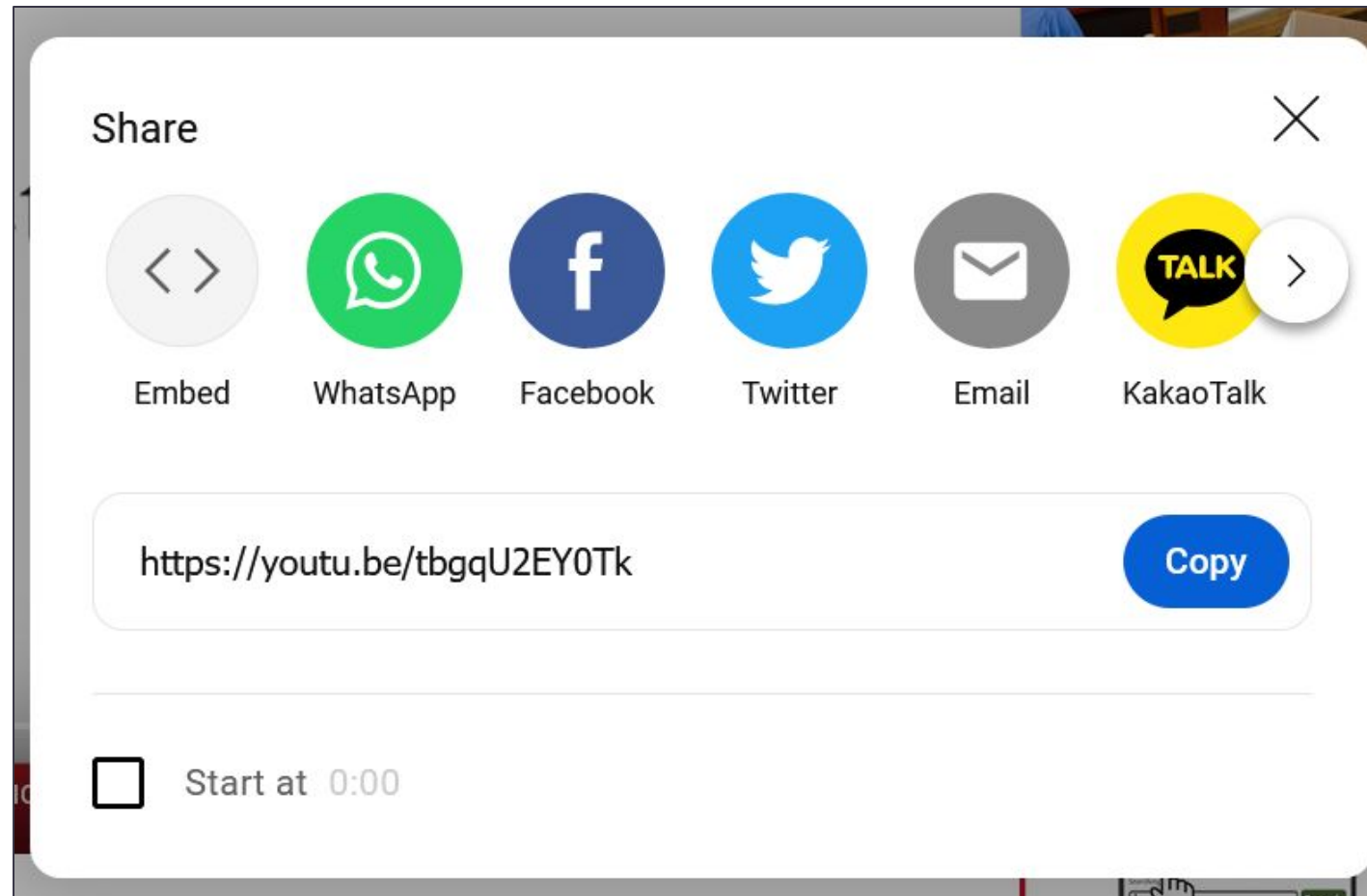
NIU Librari...  
47 subscribers

Subscribed

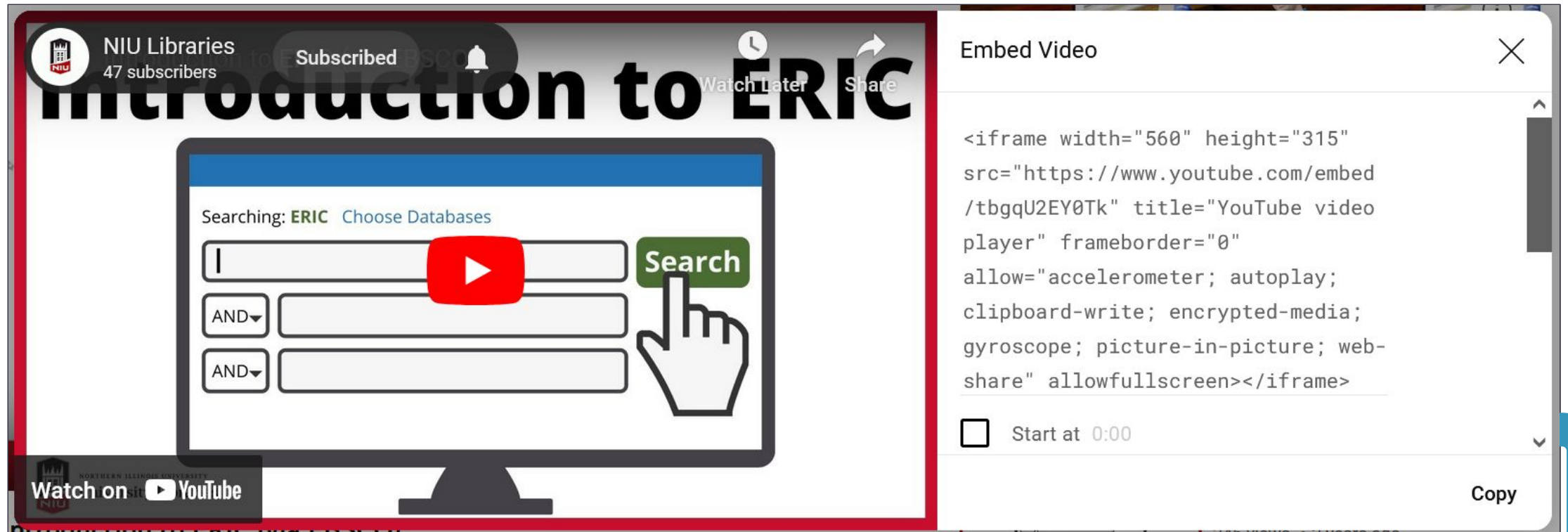
Like

Share

# 1.2 Copy YouTube Embed Code



# 1.3 Copy YouTube Embed Code



The image shows a YouTube video player interface. The video title is "Introduction to ERIC" by NIU Libraries, which has 47 subscribers. The video is marked as "Subscribed". The video content shows a search interface with the text "Searching: ERIC Choose Databases" and a search button labeled "Search". A hand cursor is pointing at the search button. The video player includes "Watch Later" and "Share" buttons. Below the video player, there is a "Watch on YouTube" button. To the right of the video player, an "Embed Video" dialog box is open, displaying the following embed code:

```
<iframe width="560" height="315" src="https://www.youtube.com/embed/tbgqU2EY0Tk" title="YouTube video player" frameborder="0" allow="accelerometer; autoplay; clipboard-write; encrypted-media; gyroscope; picture-in-picture; web-share" allowfullscreen></iframe>
```

Below the code, there is a checkbox labeled "Start at 0:00". A "Copy" button is located at the bottom right of the embed dialog.

# 1.4 Copy YouTube Embed Code

```
<iframe width="560" height="315"  
src="https://www.youtube.com/embed/tbgqU2EY0Tk"  
title="YouTube video player" frameborder="0" allow="accelerometer;  
autoplay; clipboard-write; encrypted-media; gyroscope;  
picture-in-picture; web-share" allowfullscreen></iframe>
```

## 2. Add Responsive Coding

```
<div class="embed-responsive embed-responsive-16by9">  
<iframe width="560" height="315"  
src="https://www.youtube.com/embed/tbgqU2EY0Tk"  
title="YouTube video player" frameborder="0"  
allow="accelerometer; autoplay; clipboard-write; encrypted-media;  
gyroscope; picture-in-picture; web-share" allowfullscreen></iframe>  
</div>
```

# 3. Add Alt Text Description/Title

```
<div class="embed-responsive embed-responsive-16by9">  
<iframe title= "Video Tutorial: Introduction to ERIC"  
<iframe width="560" height="315"  
src="https://www.youtube.com/embed/tbgqU2EY0Tk"  
title="YouTube video player" frameborder="0"  
allow="accelerometer; autoplay; clipboard-write; encrypted-media;  
gyroscope; picture-in-picture; web-share" allowfullscreen></iframe>  
</div>
```

# 4. Add Video to LibGuide

⚙️ Add / Reorder ▾

- ADD
- Rich Text / HTML
- Database
- Media / Widget**
- Document / File
- RSS Feed
- Guide List
- Poll
- Google Search

Create New Widget

[Reuse Existing Widget](#)

[Subject Associations](#)

Enter the code snippet for the media / widget you want to embed within your content box. In most cases, the code will contain an OBJECT, EMBED or SCRIPT tag.

**Name**

Introduction to ERIC

**Embed Code**

```
<div class="embed-responsive embed-responsive-16by9">
<iframe title= "Video tutorial: Introduction to ERIC"
src="https://www.youtube.com/embed/tbgqU2EY0Tk"
frameborder="0" allow="accelerometer; autoplay; clipboard-
write; encrypted-media; gyroscope; picture-in-picture"
allowfullscreen></iframe>
</div>
```



# Questions?