

EX LIBRIS' USTAT

Anita Foster

Head, Acquisitions and Electronic Resources Unit

Milner Library, Illinois State University

November 22, 2013

USTAT

- Released as UStat Usage Statistics Service in April 2010
 - Available to all SFX and Verde users at no charge
 - Contact CARLI for access information
- Cloud based product, accessible via the web
 - Hosted by Ex Libris

USTAT USES

- **Report journal and database usage when needed**
- **Evaluate resource usage and identify trends**
- **Collection development needs**
 - Evaluate subscriptions
 - Discover candidates for cancellation
 - Reinstate subscriptions if warranted via usage data

COUNTER STATISTICS

- **Data in UStat comes from COUNTER JR1 and DB1 Revision 3 reports**
 - **JR1: Journal Report 1: Number of Successful Full-Text Article Requests by Month and Journal**
 - **DB1: Database Report 1: Total Searches and Sessions by Month and Database**

SUSHI

- Usage data from over 60 vendors can be retrieved via UStat's SUSHI service
- Available for JR1 report only
- Details for SUSHI access must be configured within UStat.
 - Vendor sites provide site/customer details within their usage area.

LOADING DATA INTO USTAT

- **SUSHI – harvested once a month**
- **Manual data loads for any vendor/
platform not using SUSHI**
 - **Download COUNTER files. Must be in one
of the following formats:**
 - **.txt**
 - **.xls (NOT .xlsx or Excel 5.0/95 .xls)**
 - **Upload files**

DASHBOARD



Usage Reports

View charts and tables that display usage statistics data by journal, publisher, platform, and subscriber. Drill down on these charts and tables to view more detailed reports.

[Usage Reports](#)



Cost Usage Reports

View tables that display cost usage statistics data by journal, platform. Drill down to view usage reports.

[Cost Usage Reports](#)



Administration

Upload files and view information about these files. Check whether data is missing for a specific period of time or for a certain subscriber or platform. Create and edit SUSHI accounts. View SUSHI harvest history.

[Administration](#)

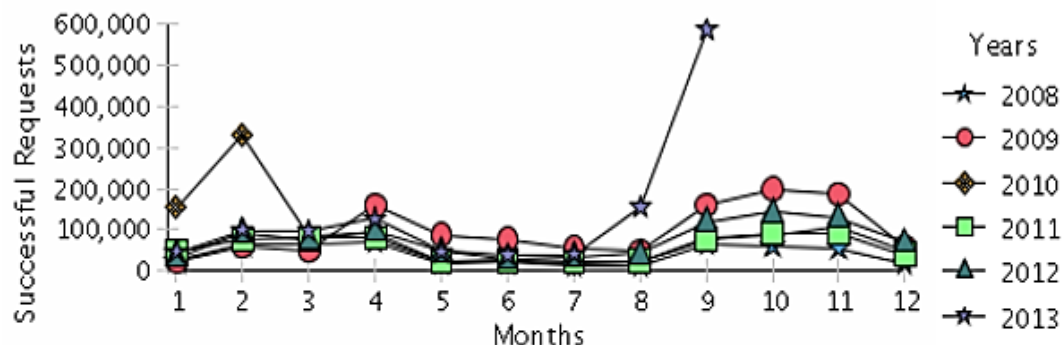


Management

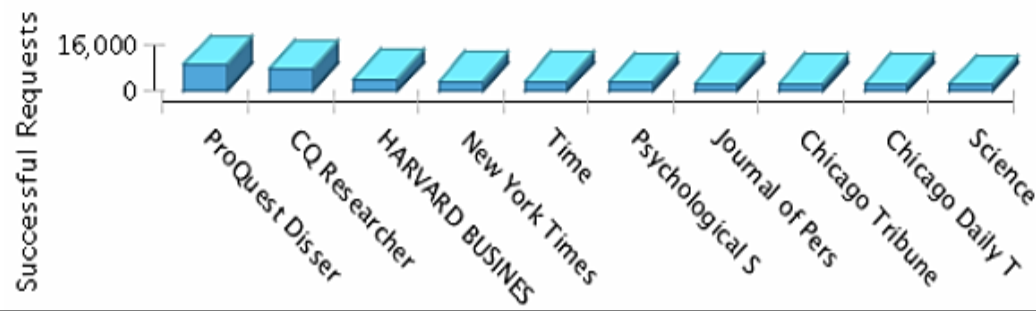
Access and edit your user details

[Management](#)

Journal Usage - Annual Trends



Most Frequently Used Journals - Last 12 Months



ADMINISTRATION



[Home](#) > [Administration](#) > [Uploaded Files](#)

Uploaded Files

Missing Data

SUSHI Accounts

SUSHI Harvest History

Filter : All Files All Subscribers Uploaded in the Last 3 Months

Upload File

1 - 10 of 106 files

1 2 3 > >>

<u>File Name</u>	<u>Upload Date</u>	<u>Uploading User</u>	<u>Subscriber</u>	<u>Status</u>	
1 RSC DB1 Q3 2013.xls	29 Oct 2013 15:47:36	01ilcso- isu.isu_admin	Milner Library	Fully processed	Details File Delete
2 LexisNexis DB1 Q3 2013.xls	29 Oct 2013 15:36:14	01ilcso- isu.isu_admin	Milner Library	Fully processed	Details File Delete
3 Ingenta DB1 Q3 2013.xls	29 Oct 2013 15:22:55	01ilcso- isu.isu_admin	Milner Library	Fully processed	Details File Delete
4 IEEEExplore JR1 Q3 2013.xls	29 Oct 2013 15:11:11	01ilcso- isu.isu_admin	Milner Library	Fully processed	Details File Delete
5 IEEE JR1 Q3 2013.xls	29 Oct 2013 15:04:43	01ilcso- isu.isu_admin	Milner Library	Fully processed	Details File Delete
6 APA PsycCrit DB1 Q3 2013.xls	29 Oct 2013 14:41:35	01ilcso- isu.isu_admin	Milner Library	Fully processed	Details File Delete
7 Sushi_allen-press_JR1_201309_466936623_1_response....	25 Oct 2013 05:53:18	Sushi Scheduler	Milner Library	Fully processed	Details File Delete
8 Sushi_aps_JR1_201309_466936447_1_response.xml	25 Oct 2013 05:52:03	Sushi Scheduler	Milner Library	Fully processed	Details File Delete
9 Sushi_ingentaconnect_JR1_201309_466936389_1_respon...	25 Oct 2013 03:34:13	Sushi Scheduler	Milner Library	Fully processed	Details File Delete
10Sushi_mary-ann-liebert,-inc_JR1_201309_466936229_1...	25 Oct 2013 03:23:03	Sushi Scheduler	Milner Library	Fully processed	Details File Delete

VIEWING DATA



Home > Usage Reports

Usage Statistics by Journal

- View usage trends and growth by journal
- View the number of successful requests for each journal
- Create detailed reports for specific journals

Usage Statistics by Database

- View usage trends and growth by database
- View the number of searches and sessions for each database
- Create detailed reports for specific databases

Usage Statistics by Publisher

- View journals statistics for each publisher
- View databases statistics for each publisher
- Create detailed database or journal reports for specific publishers

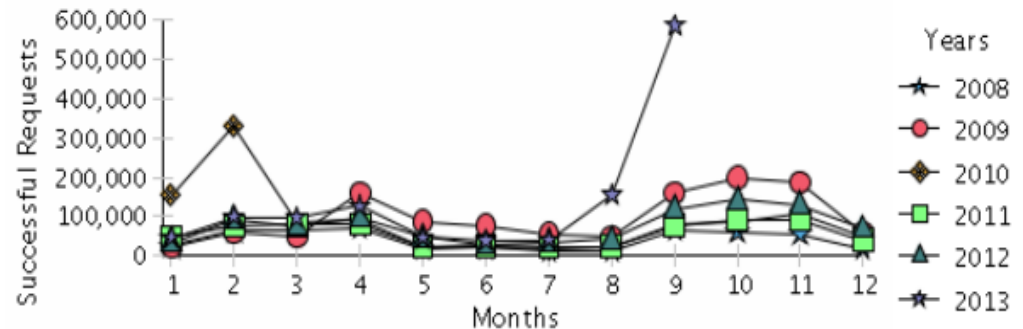
Usage Statistics by Platform

- View journals statistics for each platform
- View databases statistics for each platform
- Create detailed database or journal reports for specific platforms

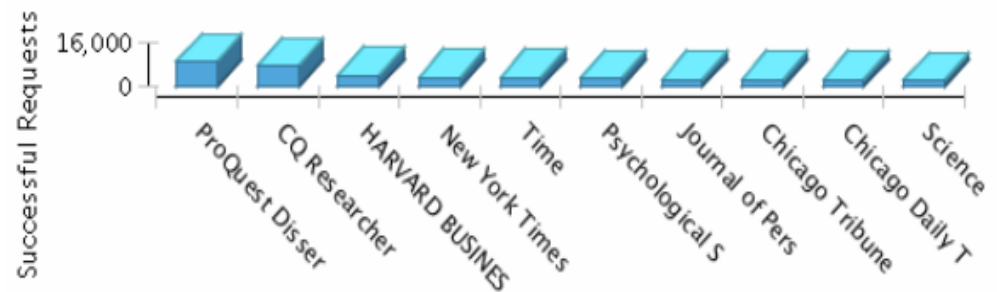
Usage Statistics by Subscriber

- View journals statistics for each subscriber
- View databases statistics for each subscriber
- Create detailed database or journal reports for specific subscribers

Journal Usage - Annual Trends



Most Frequently Used Journals - Last 12 Months



ALL TITLES - JOURNALS

Showing page 1 of 25

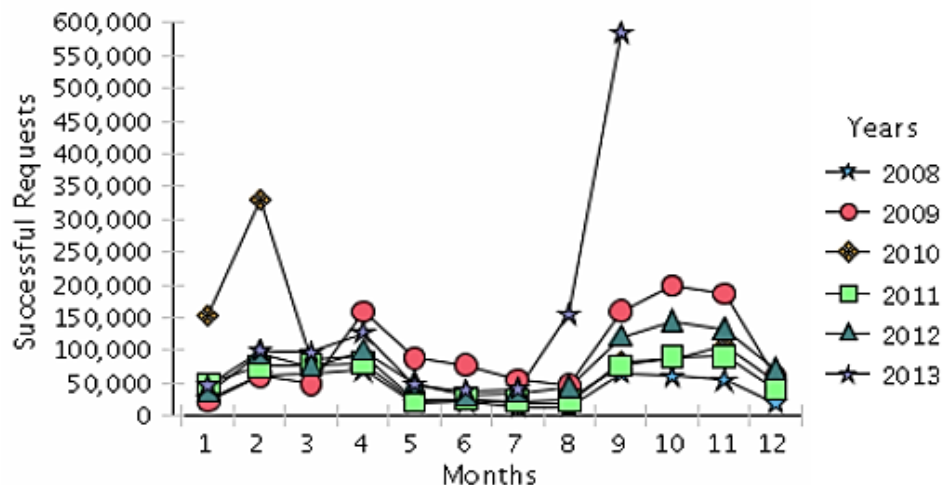


Go to page:

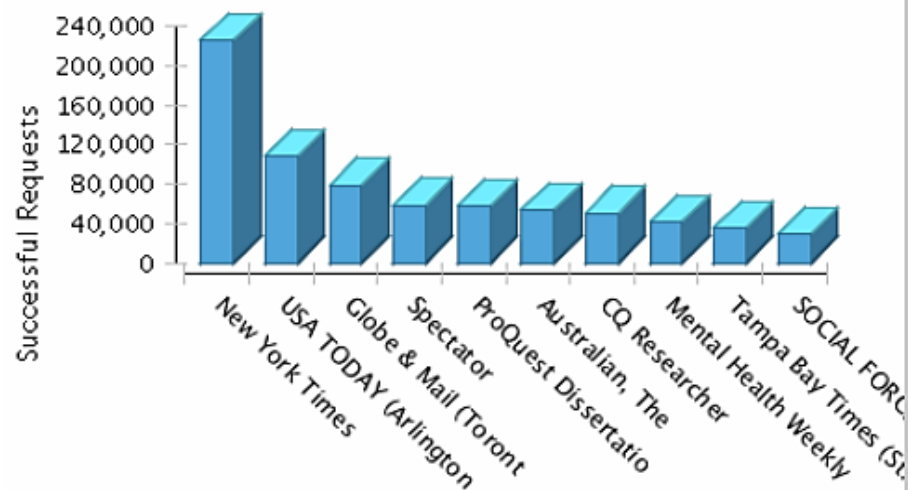


Usage Statistics by Journal

Journal Usage - Annual Trends



Most Frequently Used Journals



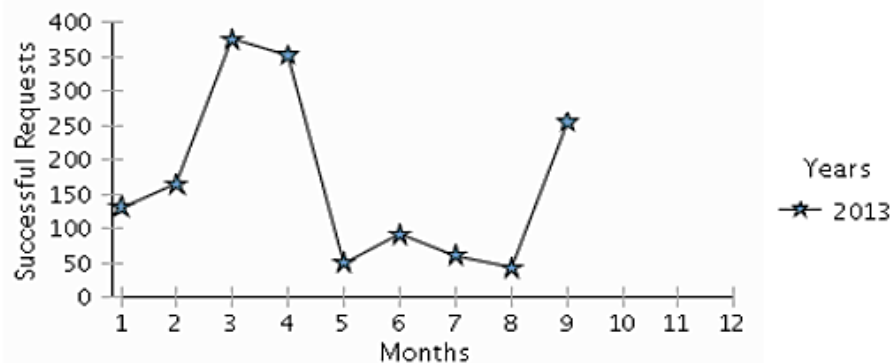
Title	ISSN	e-ISSN	Total	2008	2009	2010	2011	2012	2013
1 New York Times	0362-4331		226,085	4,144	9,266	3,596	3,689	1,995	203,395
2 Globe & Mail (Toronto Canada)	0319-0714		78,892			140	197	72	78,483
3 Australian, The	1038-8761		54,420	1				9	54,410
4 USA TODAY (Arlington VA)	0734-7456		108,285	4,825	41,032	15,266	1,235	607	45,320
5 Mental Health Weekly Digest	1543-6616		41,299			29	28	27	41,215
6 Tampa Bay Times (St. Petersburg FL)			35,782					38	35,744
7 Spectator	0038-6952		58,892	21		29	17	24,433	34,392
8 The Pittsburgh Tribune-Review (Pittsburgh PA)			19,379			36	15	13	19,315
9 The St. Petersburg Times (St. Petersburg FL)	1563-6291		19,170						19,170
10 Mental Health Weekly	1058-1103	1556-7583	26,974		0	57	10	11,622	15,285

SPECIFIC TITLES - JOURNALS

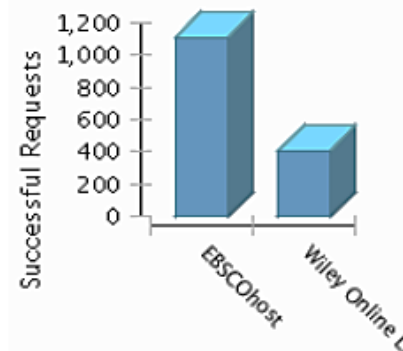
Usage Statistics for Journal: READING TEACHER

[Go to Verde KB Manage](#)

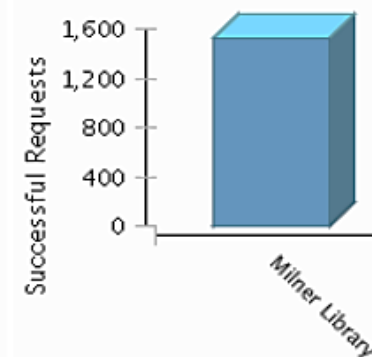
Journal Usage - Annual Trends



Top Platforms



Top Subscribers



Journal Details

Title	READING TEACHER
Publisher	International Reading Association
ISSN	0034-0561
e-ISSN	1936-2714

Platforms

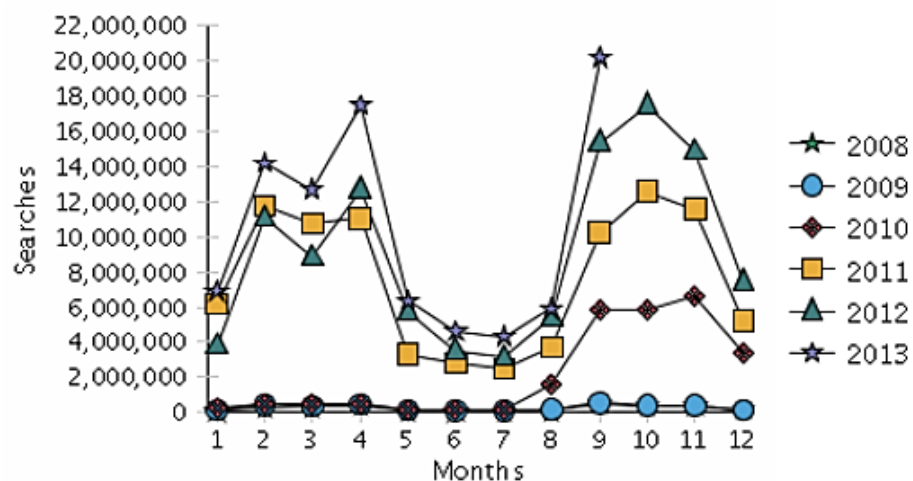
Platform	Total	Jan 13	Feb 13	Mar 13	Apr 13	May 13	Jun 13	Jul 13	Aug 13	Sep 13	Oct 13	Nov 13	Dec 13
1 EBSCOhost	1,114	113	144	227	253	40	73	44		220			
2 JSTOR	0	0	0	0	0	0	0	0	0	0			
3 Wiley Online Library	411	18	21	149	99	10	19	17	43	35			

Subscribers

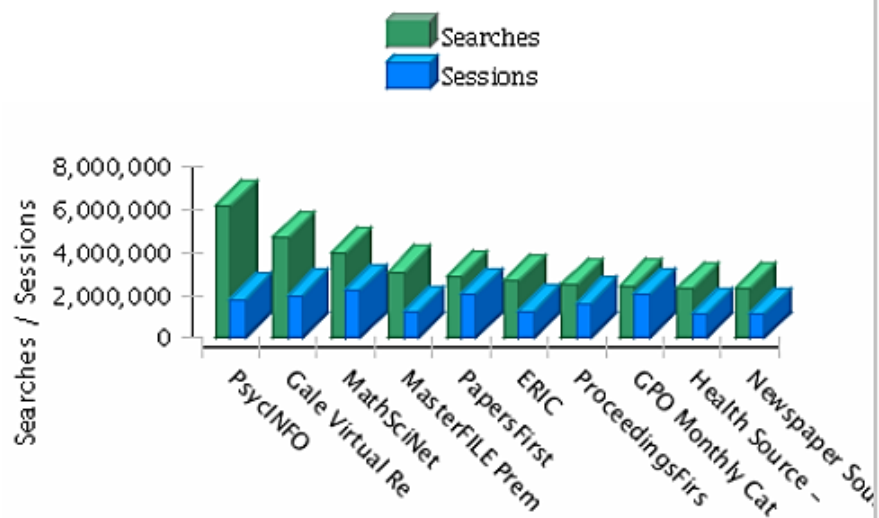
Subscriber	Total	Jan 13	Feb 13	Mar 13	Apr 13	May 13	Jun 13	Jul 13	Aug 13	Sep 13	Oct 13	Nov 13	Dec 13
1 Milner Library	1,525	131	165	376	352	50	92	61	43	255			

Usage Statistics by Database

Database Usage - Annual Trend



Most Frequently Used Databases

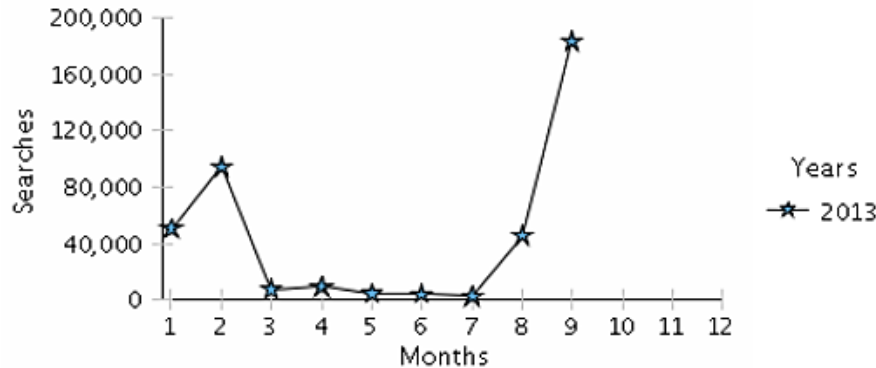


Database	Total Federated Sessions	Total Federated Searches	Total Database Sessions	Total Database Searches	2008	2009	2010	2011	2012	2013
1 Gale Virtual Reference Library	89,791	89,791	1,983,049	4,694,360		9,508	310,147	1,072,997	1,891,366	1,410,342
2 MasterFILE Premier	738	13	1,202,671	3,084,838		1,498	172,072	651,600	1,329,494	930,174
3 GeoRef	295,817	295,817	775,033	1,663,619	9,537	4,933	172,960	440,515	289,749	745,925
4 News (AP, UPI, etc.)	1	1	523,567	1,539,510					949,126	590,384
5 Academic Search Complete	1,113	1,113	877,722	2,190,414			234,971	732,343	727,138	495,962
6 ERIC	13	13	1,269,918	2,684,750	238,471	209,475	321,773	719,322	708,314	487,395
7 Communication & Mass Media Complete	10,356	9,077	852,688	2,120,951	41,298	38,787	195,279	672,916	689,153	483,518
8 CINAHL with Full Text	7,390	6,881	833,435	2,143,890	21,708	50,270	216,294	679,134	695,411	481,073
9 Image Collection	862	862	837,844	2,125,249	10,132	85,851	281,530	621,345	657,583	468,808
10 SocINDEX with Full Text	1,113	1,113	775,914	1,970,602			173,819	656,491	671,526	468,766
11 Criminal Justice Abstracts with Full Text			624,561	1,669,125				526,653	675,582	466,890
12 Humanities International Complete	1,113	1,113	766,458	1,963,424			171,675	656,673	668,409	466,667
13 Health Source: Nursing/Academic Edition	6,648	6,595	788,488	1,987,981	13,063	15,531	173,153	654,485	666,875	464,874
14 Professional Development Collection	149	13	814,850	1,986,958	8,500	12,676	176,118	656,618	668,752	464,294
15 Art & Architecture Complete	1,113	1,113	759,582	1,955,331			171,012	653,273	667,090	463,956
16 Publisher Provided Full Text Searching File			302,382	806,462					342,528	463,934

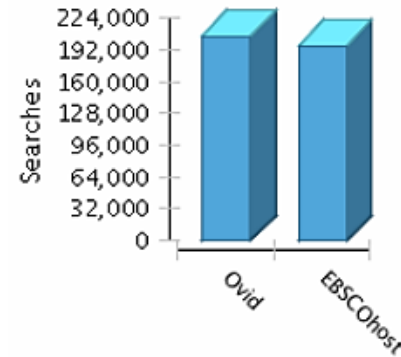
Usage Statistics for Database: PsycINFO

[Go to Verde KB Manage](#)

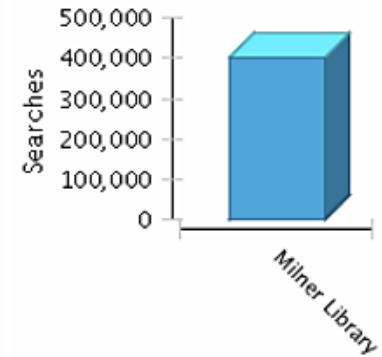
Database Usage - Annual Trend



Top Platforms



Top Subscribers



Database Measures

Measure Type	Total	Jan 13	Feb 13	Mar 13	Apr 13	May 13	Jun 13	Jul 13	Aug 13	Sep 13	Oct 13	Nov 13	Dec 13
Database Searches	402,167	50,519	94,705	7,339	9,177	4,390	4,128	2,624	45,543	183,742			
Database Sessions	206,394	27,627	51,467	3,135	3,651	1,635	1,299	970	25,267	91,343			
Database Federated Searches	0	0	0	0	0	0	0	0	0	0			
Database Federated Sessions	0	0	0	0	0	0	0	0	0	0			

Publishers

Publisher	Total Federated Sessions	Total Federated Searches	Total Database Sessions	Total Database Searches	Jan 13	Feb 13	Mar 13	Apr 13	May 13	Jun 13	Jul 13	Aug 13	Sep 13	Oct 13	Nov 13	Dec 13
1 American Psychological Association	0	0	127,808	205,728	22,722	43,720	5,651	6,377	3,480	3,127	1,971	23,273	95,407			
2 Unknown Publisher			78,586	196,439	27,797	50,985	1,688	2,800	910	1,001	653	22,270	88,335			

Platforms

Platform	Total Federated Sessions	Total Federated Searches	Total Database Sessions	Total Database Searches	Jan 13	Feb 13	Mar 13	Apr 13	May 13	Jun 13	Jul 13	Aug 13	Sep 13	Oct 13	Nov 13	Dec 13
1 EBSCOhost			78,586	196,439	27,797	50,985	1,688	2,800	910	1,001	653	22,270	88,335			
2 Ovid	0	0	127,808	205,728	22,722	43,720	5,651	6,377	3,480	3,127	1,971	23,273	95,407			

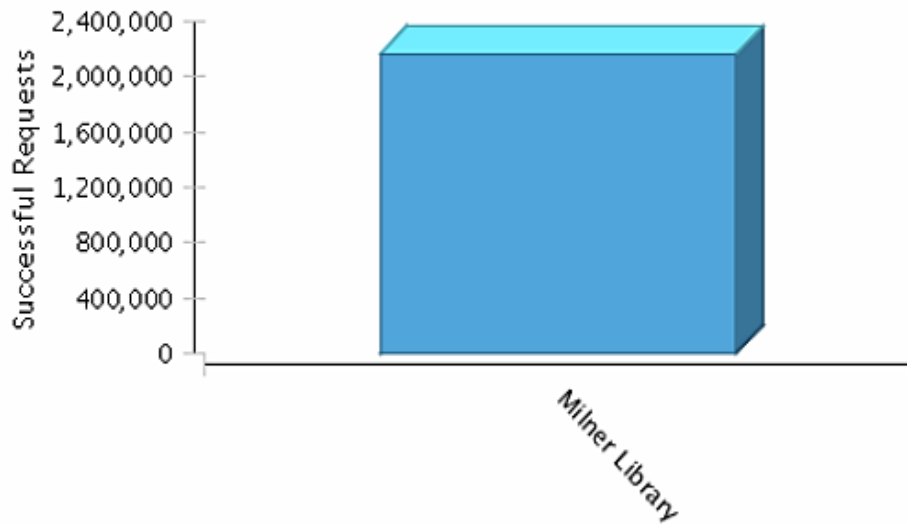
SUBSCRIBER DATA

Showing page 1 of 1

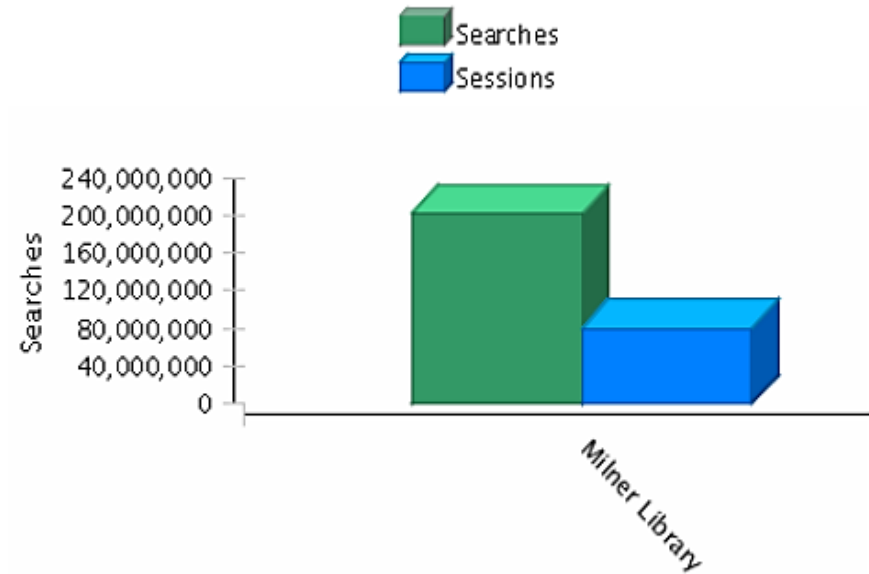
Go to page:

Usage Statistics by Subscriber

Journal Subscribers with the Greatest Number of Requests



Database Subscribers with the Greatest Number of Requests



<u>Subscriber</u>	<u>Number of Journals</u>	<u>Total Journal Requests</u>	<u>Number of Databases</u>	<u>Total Database Searches</u>	<u>Total Database Sessions</u>	<u>Total Federated Searches</u>	<u>Total Federated Sessions</u>
1 Milner Library	29,613	2,158,662	509	202,074,638	80,195,575	39,284,092	39,041,872

EXPORTING THE DATA

- Images created in UStat can be saved or exported
- Data files can also be exported
 - Available formats:
 - Excel
 - PostScript
 - PDF
 - Word
 - Powerpoint

SAMPLE EXPORT FILE

	A	B	C	D	E	F	G	H	I	J	K	L	N	O	P	Q	R	S	T	U	V	W	X	Y	Z
1	Usage Statistics by Journal																								
2	Report Filter	Start Date: Jan 13				End Date: Dec 13				Title Search Term: reading_teacher						ISSN/e-ISSN Search									
3																									
4		Title		ISSN	e-ISSN	Total	Jan 13	Feb 13	#####	Apr 13	May 13	Jun 13	Jul 13	Aug 13	Sep 13	Oct 13	Nov 13	Dec 13							
5	1	OHIO READING TEACHER		0030-		2	0	0	0	2															
6	2	Reading Teacher		1936-		81								81											
7	3	Reading Teacher		0034-0561	1936-2714	1,525	131	165	376	352	50	92	61	43	255										
8	4	The Reading Teacher				2	1	0	0	1															
9																									
10																									
11																									
12																									
13																									
14																									
15																									

COST PER USE MODULE

- **Added to UStat January 2012**
- **Data manually loaded into UStat**
 - **Added at any time**
- **Creates estimated cost per use if 12 months of usage data is unavailable**
- **Milner Library currently adds cost by title, not cost by package**

SNAPSHOT DASHBOARD



[Home](#) > Cost Usage Reports

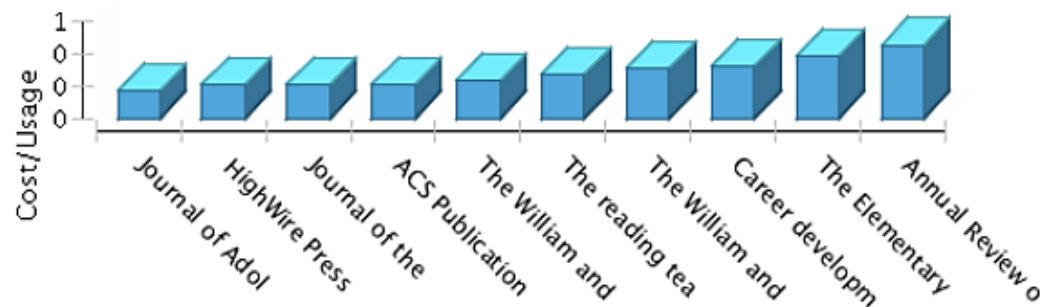
Cost Usage Statistics by Title

- View and compare cost usage of Journal titles
- View most valuable and poorest valued journals
- Link to specific Journal Title Usage reports

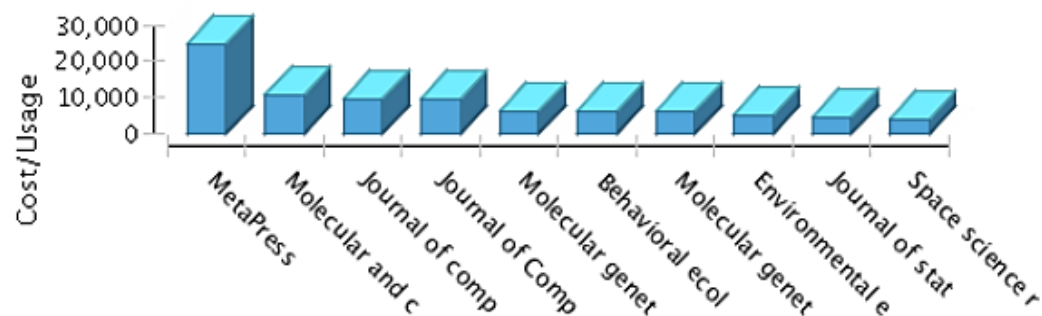
Cost Usage Statistics by Platform

- View and compare cost usage of Platforms
- View most valuable and poorest valued Platforms
- Link to specific Platform Usage reports

Best Valued Platforms/Titles (for Cost Amount > 0)



Poorest Valued Platforms/Titles (for Cost Amount > 0)



SAMPLE REPORT

	A	B	C	D	E	F	G	H	I	J
1	Title	ISSN	e-ISSN	Platform	Order ID	Start Date	End Date	Amount	Cost/Usage	Estimated
2	Journal of the American Dietetic Association	0002-8223	1878-3570	ScienceDirect	Elsevier2010	2010-01-01	2010-12-31		0.15	No
3	The William and Mary quarterly	0043-5597	1933-7698	JSTOR	JSTOR2011	2011-01-01	2011-12-31		0.16	No
4	Journal of Adolescent & Adult Literacy	1081-3004	1936-2706	Wiley Online Library	Wiley2012-a	2012-01-01	2012-12-31		0.17	No
5	Journal of the American Dietetic Association	0002-8223	1878-3570	ScienceDirect	Elsevier2011	2011-01-01	2011-12-31		0.17	No
6	Journal of the American Dietetic Association	0002-8223	1878-3570	ScienceDirect	Elsevier2012	2012-01-01	2012-12-31		0.21	Yes
7	The William and Mary quarterly	0043-5597	1933-7698	JSTOR	JSTOR2012	2012-01-01	2012-12-31		0.23	No
8	The reading teacher	0034-0561	1936-2714	Wiley Online Library	Wiley2012-a	2012-01-01	2012-12-31		0.27	No
9	The William and Mary quarterly	0043-5597	1933-7698	JSTOR	JSTOR2013	2013-01-01	2013-12-31		0.31	Yes
10	Career development for exceptional individuals	0885-7288	1557-5047	HighWire Press	Sage2012	2012-01-01	2012-12-31		0.32	Yes
11	The Elementary school journal	0013-5984	1554-8279	JSTOR	JSTOR2012	2012-01-01	2012-12-31		0.38	No

THE FUTURE

- **What about electronic books or streaming media?**
 - On Ex Libris' enhancements list
- **What about Project Counter 4?**
 - Ex Libris is currently investigating
 - Impact: reformatting files may become unsustainable

QUESTIONS?

- **Contact info:**

- **Anita Foster**

- akfoste@illinoisstate.edu**